

AIR-TO-WATER HEAT PUMP



**The compact solution for heating,
cooling and domestic hot water
in one product**

with a built-in DHW boiler with a volume of 250 L

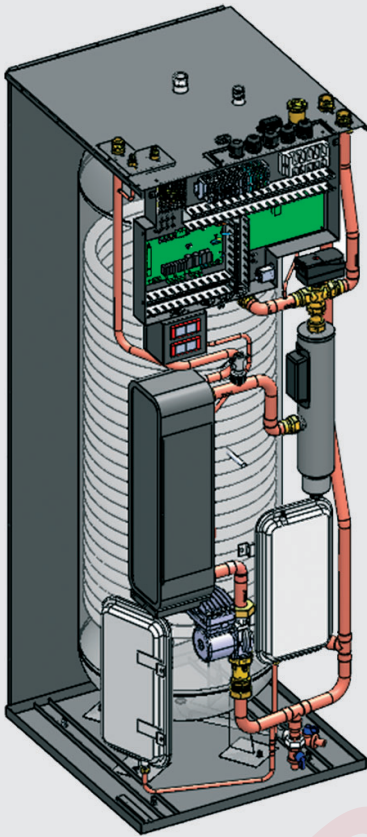
A+++



Q www.bgr.bg

all in one

The built-in boiler for DHW production, with a volume of 250 L and an enlarged coil, is heated by the heat pump through the built-in 3-way valve, which redirects the entire water flow and power of the heat pump for maximum efficient and fast heating of hot water for sanitary and domestic needs. In case of need, the built-in instantaneous electric heater with a maximum power of 9 kW is also activated, which can be limited to 3 kW or 6 kW depending on the characteristics and needs of the specific site.



- Built-in DHW boiler with a volume of 250 L, made of SUS316L stainless steel
- Built-in 3-way valve for DHW - origin Sweden
- Built-in electric instantaneous heater 9 kW (3x3 kW)
- Built-in expansion tank 10 l. (2x5 l.) for heating/cooling
- Built-in flow switch
- Electronic circulation pump with variable speed (PWM), class A
- Built-in electronic emergency thermostats
- Control of mixing valves and pumps for 2-temperature zones
- Control of circulation pumps for heating/cooling
- Operating temperature range -25~43°C
- Automatic switching Heating/Cooling
- Quiet operation
- Twin-rotor compressor - extremely efficient at partial load operation and installed in an additionally soundproofed housing
- Low-speed DC fans

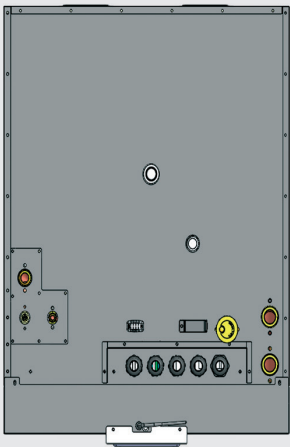
Space and money saving solution

With its step - 600 mm wide and 710 mm deep, the All in One indoor unit is designed for installation in standard kitchen modules or laundry niches, so you can save both space and money from every square meter of living space.



Easy access and service

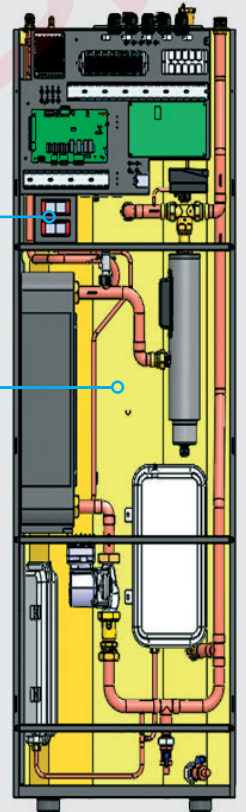
- The concept of accessing all hydraulic and electrical components in the indoor unit, through quick and easy removal of the front panel, saves time during installation, commissioning and service.
- **Emergency thermostats** – In the event of a malfunction in the outdoor unit or the indoor unit electronics, independent electronic thermostats allow emergency and independent activation and control of the built-in electric heaters for both heating and DHW.
- **50 mm foamed PU insulation** – retains heat in the DHW tank longer, leading to less frequent switching on to maintain the temperature and lower electricity bills.



Refrigerant, water and electrical connections are on the top of the indoor unit for maximum installation convenience

Thermostats for emergency operation

50 mm foamed PU insulation



Convenient interface, WiFi server for monitoring and control



Inverter technology



Touch screen



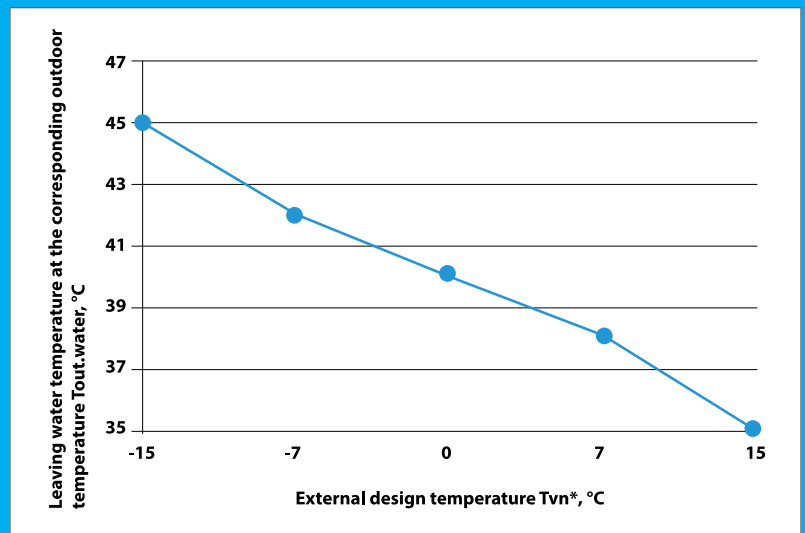
Silent mode



Menu in Bulgarian language

Temperature curve control

Users are given the opportunity to adjust the system to meet the requirements in each specific case – variable heat load, different insulation, joinery, etc. by building their own temperature curve. It is created as an inverse linear characteristic between the outdoor temperature (five values) and the leaving water temperature (five values at each set outdoor temperature).



MODEL			Aqua Aura II 6S All-In-One 250	Aqua Aura II 9S All-In-One 250	Aqua Aura II 12S All-In-One 250	Aqua Aura II 15S All-In-One 250	Aqua Aura II 19S All-In-One 250
Energy efficiency class - low temperature application (W35)			A+++	A+++	A+++	A+++	A+++
SCOP, temperate climate zone, (T _{water} =+35°C)			4.72	4.72	4.71	4.98	4.83
Power supply, outdoor unit	V/Hz/Ph		220-240/50/1	220-240/50/1	220-240/50/1	380-420/50/3	380-420/50/3
Power supply, indoor unit	V/Hz/Ph		380-420/50/3 или 220-240/50/1				
Heating capacity min./max. (W35°C @ A7°C)	kW		3.5 / 6.5	4.3 / 9.2	5.5 / 11.6	7.3 / 15.35	9.2 / 18.5
Power supply min./max. (W35°C @ A7°C)	kW		0.76 / 1.41	0.93 / 2.1	1.11 / 2.69	1.22 / 3.21	1.83 / 4.14
C.O.P min./max. (W35°C @ A7°C)	W/W		4.5 / 4.7	4.38 / 4.71	4.3 / 4.9	4.75 / 5.06	4.47 / 5.01
Heating capacity min./max. (W45°C @ A7°C)	kW		3.15 / 6.0	3.9 / 8.6	4.9 / 11.2	5.6 / 14.3	8.5 / 18.2
Power supply min./max. (W45°C @ A7°C)	kW		0.94 / 1.73	1.16 / 2.55	1.4 / 3.27	1.55 / 3.91	2.25 / 5.0
C.O.P min./max. (W45°C @ A7°C)	W/W		3.34 / 3.56	3.37 / 3.58	3.3 / 3.5	3.64 / 3.82	3.6 / 3.82
Cooling capacity min./max. (W18°C @ A35°C)	kW		6.22 / 7.45	6.7 / 9.5	7.0 / 9.8	7.23 / 18.6	8.5 / 22.5
Power supply min./max. (W7°C @ A35°C)	kW		1.4 / 1.86	1.68 / 2.24	1.79 / 2.51	1.33 / 4.92	1.66 / 6.29
E.E.R min./max. (W7°C @ A35°C)	W/W		4.05 / 4.45	4.0 / 4.6	3.8 / 4.0	3.78 / 5.42	3.58 / 5.12
Cooling capacity min./max. (W7°C @ A35°C)	kW		3.5 / 4.5	4.9 / 7.2	4.9 / 8.5	4.46 / 13.0	5.5 / 16.0
Power input min./max.	kW		1.33 / 1.68	1.45 / 2.37	1.36 / 2.99	2.59 / 4.39	2.97 / 5.51
E.E.R min./max.	W/W		2.5 / 2.74	2.8 / 3.1	2.6 / 3.5	2.96 / 3.29	2.85 / 3.2
Outdoor temperature min./max., heating	°C		-25 ~ 35	-25 ~ 35	-25 ~ 35	-25 ~ 35	-25 ~ 35
Outdoor temperature min./max., cooling	°C		7 ~ 43	7 ~ 43	7 ~ 43	7 ~ 43	7 ~ 43
Max. supply temperature, heating	°C		58	58	58	58	58
Min. supply temperature, heating	°C		20	20	20	20	20
Min. supply temperature, cooling	°C		7	7	7	7	7
Compressor	Type	-	Dual rotor DC inverter	Dual rotor DC inverter	Dual rotor DC inverter	Dual rotor DC inverter	Dual rotor DC inverter
Fan	Number	-	1	1	1	2	2
	Flow	m ³ /h	2500	3150	3150	6200	7000
	Power supply	W	34	45	45	90	120
Sound pressure level	Internal/external	dB(A)	44/52	44/53	44/52	44/59	44/59
Heat exchanger	Type	-	Пластинчат	Пластинчат	Пластинчат	Пластинчат	Пластинчат
	Pressure drop	kPa	26	26	26	26	26
	Pipe connections	Inch	G1"	G1"	G1"	G1-1/4"	G1-1/4"
	Expansion vessel	l	2 x 5	2 x 5	2 x 5	2 x 5	2 x 5
Built-in water tank for DHW	Type	-	SUS316L	SUS316L	SUS316L	SUS316L	SUS316L
	Volume	l	250	250	250	250	250
	Coil	m ²	2.6	2.6	2.6	3.1	3.1
Circulation pump	Type	-	DC, PWM	DC, PWM	DC, PWM	DC, PWM	DC, PWM
	Head, max.	mH ₂ O	7.5	9.0	9.0	12.5	12.5
	Flow rate - Min./Nominal	m ³ /h	0.75 / 1.04	0.94 / 1.55	1.44 / 2.05	2.23 / 2.62	2.66 / 3.3
Built-in electric heater	Power	kW	9 (3 x 3)	9 (3 x 3)	9 (3 x 3)	9 (3 x 3)	9 (3 x 3)
Overall dimensions / packaging WxDxH	Indoor unit	mm	600x710x1720/ 670x785x1920	600x710x1720/ 670x785x1920	600x710x1720/ 670x785x1920	600x730x1720/ 670x800x1920	600x730x1720/ 670x800x1920
	Outdoor unit	mm	1010x370x700/ 1040x455x765	1165x370x845/ 1210x455x915	1165x370x845/ 1210x455x915	1085x400x1450/ 1140x475x1605	1085x400x1450/ 1140x475x1605
Refrigerant	Type / quantity	kg	R32 / 1.1	R32 / 1.6	R32 / 1.8	R32 / 2.6	R32 / 3.0
	Additional freon > 5m	g/m	30.00	30.00	30.00	30.00	30.00
	Additional comp. oil	g/m	according to manual	according to manual	according to manual	according to manual	according to manual
Pipe connections	Liquid - gas	inch	3/8" - 5/8"	3/8" - 5/8"	3/8" - 5/8"	3/8" - 3/4"	3/8" - 3/4"
	Maximum length	m	20.00	20.00	20.00	20.00	20.00
Net weight	Indoor / outdoor unit	kg	139 / 57	140 / 70	140 / 77	140 / 110	140 / 120