

Technical parameters

Indoor unit		PRO CLO-8S	PRO CLO-10S	PRO CLO-12S	PRO CLO-16S	
Outdoor unit		PRO CLI-8S	PRO CLI-10S	PRO CLI-12S	PRO CLI-16S	
Technical parameters						
Heating capacity/COP(A+7°C/W35°C)	kW/COP	8.00/5.05	10.00/4.80	12.10/4.80	16.00/4.50	
Heating capacity/COP(A+7°C/W55°C)	kW/COP	7.70/2.85	9.50/2.70	11.00/2.85	13.50/2.95	
Heating capacity/COP(A-7°C/W35°C)	kW/COP	8.00/2.70	9.00/2.70	10.50/2.70	12.90/2.70	
Heating capacity/COP(A-7°C/W55°C)	kW/COP	7.00/1.95	8.00/1.85	10.00/1.95	10.50/2.00	
Heating capacity/COP(A-15°C/W35°C)	kW/COP	6.80/2.27	8.50/2.19	10.16/2.33	12.01/2.27	
Heating capacity/COP(A-15°C/W55°C)	kW/COP	5.94/1.33	7.42/1.43	8.87/1.52	10.23/1.41	
Cooling capacity/EER(A35°C/W7°C)	kW/EER	6.50/2.95	8.00/2.90	11.00/2.75	13.50/2.60	
Cooling capacity/EER(A35°C/W18°C)	kW/EER	7.00/4.40	9.00/4.10	11.00/4.25	14.00/3.80	
A+7°C; W35°C (ErP-temperate climate)	Prated/SCOP	kW/--	8.80/4.90	9.50/4.88	12.00/4.70	14.00/4.63
	ηs 30°C/35°C	%	190%	189%	185%	182%
	EE class 30°C/35°C	--	A+++	A+++	A+++	A+++
A+7°C; W55°C (ErP-temperate climate)	Prated/SCOP	kW/--	7.50/3.30	9.00/3.27	11.60/3.32	13.00/3.40
	ηs 47°C/55°C	%	129%	128%	130%	133%
	EE class 47°C/55°C	--	A++	A++	A++	A++
Hydraulic module						
Power supply	V/Ph/Hz	220-240/1/50	220-240/1/50	220-240/1/50	220-240/1/50	
Power cable	mm ²	3×2.5	3×2.5	3×2.5	3×2.5	
Communication cable (indoor-outdoor)	mm ²	3x0.75 + shielding	3x0.75 + shielding	3x0.75 + shielding	3x0.75 + shielding	
Noise - power/pressure (1m)	dB(A) (1)	42/34	42/34	43/35	43/35	
Dimensions(W*H*D)	mm	490*342*910	490*342*910	490*342*910	490*910*340	
Packaging(W*H*D)	mm	620*425*1105	620*425*1105	620*425*1105	620*1105*425	
Net/Gross weight	kg	59/64	59/64	61/66	61/66	
Water connections (In. - Out.)	mm/inch	DN25/1" - DN25/1"	DN25/1" - DN25/1"	DN32/1 1/4" - DN32/1 1/4"	DN32/1 1/4" - DN32/1 1/4"	
Water pump	--	Electronic, 9 mH2O	Electronic, 9 mH2O	Electronic, 9 mH2O	Electronic, 9 mH2O	
Expansion tank	L	8.0	8.0	8.0	8.0	
Electrical heater power	kW	3.0 (6.0 - option)	3.0 (6.0 - option)	3.0 (6.0 - option)	3.0 (6.0 - option)	
Max. power input	kW	3.3	3.3	3.3	3.3	
Max. cons. current	A	16.0	16.0	16.0	16.0	
Външно тяло						
Power supply	V/Ph/Hz	220-240/1/50	220-240/1/50	380-400/3/50	380-400/3/50	
Power cable	mm ²	3×4	3×4	5×2.5	5×2.5	
Noise - power/pressure (1m)	dB(A) (1)	66/58	67/59	68/60	69/61	
Max. power input	kW	4.4	4.8	6.0	7.2	
Max. cons. current	A	20.0	22.0	9.0	11.0	
Dimensions(W*H*D)	mm	1032*445*807	1032*445*807	1098*528*869	1098*528*869	
Packaging(W*H*D)	mm	1075*495*875	1075*495*875	1140*545*1010	1140*545*1010	
Net/Gross weight	kg	67/73	71.5/77	100.1/115	103.3/117.1	
Air flow	m ³ /h	4200	4200	5500	5500	
Freon pipe diameter	mm	9.52/15.88	9.52/15.88	9.52/15.88	9.52/15.88	
Max. pipe length/displacement	m	30/20	30/20	30/20	30/20	
Refrigerant	Type/Quantity	kg	R32/1.7	R32/2.0	R32/2.0	
	Recharge after 15 m	g	(Total length of pipes - 15 m)*38 g/m			
Operating outdoor temperature	Cooling	°C	-5 ÷ 50°C			
	Heating	°C	-25 ÷ 43°C			
	DHW	°C	-25 ÷ 43°C			
Installation water temperature	Cooling	°C	+5 ÷ 25°C			
	Heating	°C	+25 ÷ 62°C			
	DHW	°C	+40 ÷ 62°C			

Bulgaria, 1408 Sofia, 115-117 Vitosha Blvd.
Tel: +359 0700 11 220, Tel: (02) 953 33 25
office@bgr.bg

www.bgr.bg

HEAT PUMP

AIR-WATER • SPLIT SYSTEM

CRYSTAL
ONYX PRO



www.bgr.bg

HEAT PUMP ONYX PRO



8 kW • 10 kW
Outdoor unit - single-phase

12 kW • 16 kW
Outdoor unit - three-phase

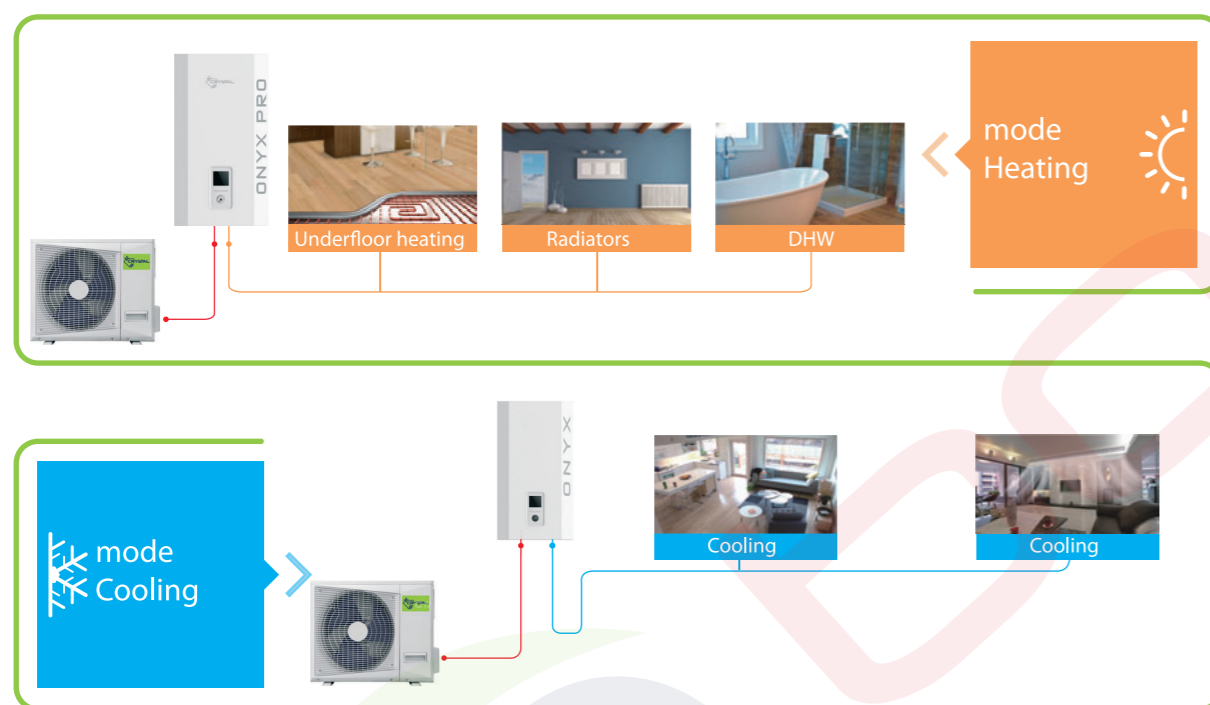


Hydraulic module

Features

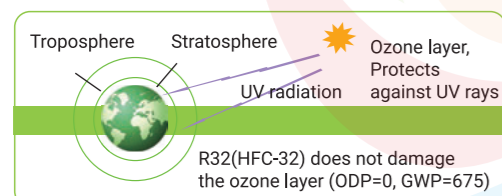
Many applications in one system

Heating, cooling and DHW with just one system. DHW can also be used for underfloor heating, radiator heating and fan coil units.



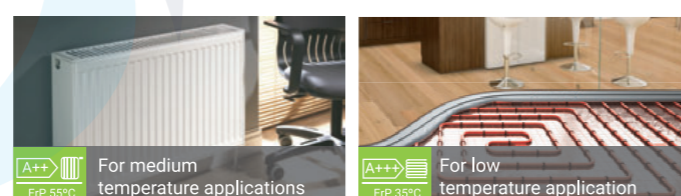
Environmental protection

Freon R32(HFC-32) with 0 ODP and 675GWP, low carbon and no harm to the ozone layer



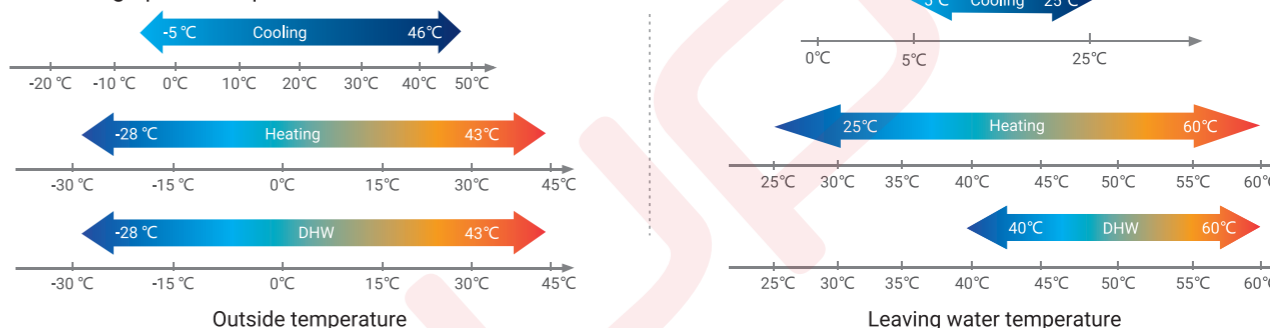
Energy efficiency

ONYX PRO heat pumps use a renewable energy source. The use of renewable sources reduces energy dependence.



Wide operating range

- Cooling operation up to 46°C
- Heating operation up to -28°C

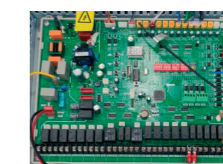


Control panel



- Full color touch screen
- Easier control and monitoring
- Built-in WiFi module, TUYA app
- Temperature curve control
- Room temperature control
- Two temperature zones
- Control of additional sources
- Cascade control up to 15 machines

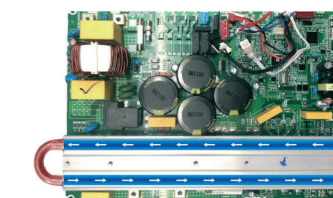
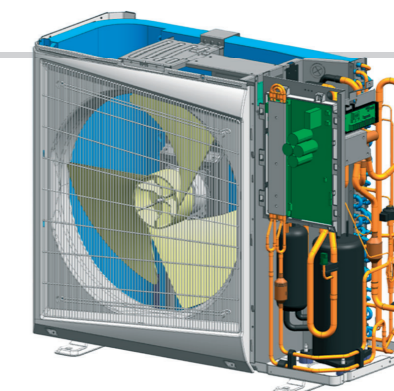
Hydraulic module components



- Built-in electric heater 3 kW (6 kW option)
- New board with more inputs/outputs
- Electronic pump with selectable speed
- Larger expansion tank – 8 L

Outdoor unit components

- Single fan outdoor unit
- Mini VRF based
- GMCC twin-rotor compressor
- Refrigerant reinjection
- DC low speed fans
- Combi board with refrigeration circuit cooling



Combined board with cooling

Dimensions

8 kW • 10 kW



67 kg / 71.5 kg
220-240V/50Hz/1Ph

12 kW • 16 kW



100 kg / 103.3 kg
380-420V/50Hz/3Ph



59 kg / 61 kg
220-240V/50Hz/1Ph

High efficiency at low outdoor temperatures

Thanks to a highly efficient compressor, a large-area heat exchanger and a precise control system, the heat pump can maintain a high temperature, even at -10°C and -15°C.

